


ENGINEERING • INNOVATION • SERVICE



WORLD  **WIDE** TM **FITTINGS inc.**
— SINCE 1950 —

Headquarters



World Wide Fittings Corporate Headquarters & Manufacturing Facility, Vernon Hills, IL

Since 1950

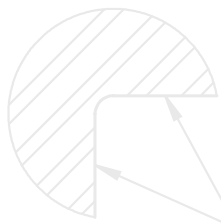
World Wide Fittings Corporation has dedicated itself to service, quality and engineered performance in the manufacturing and distribution of steel and stainless hydraulic tube and pipe fittings made to ISO and SAE standards. Our product lines include 37° Flare, Flareless Compression, "O" Ring Face Seal, Pipe, and SAE "O" Ring Boss fittings and plugs in inch and metric sizes.

World Wide supplies over 300,000,000 tube and pipe fitting components annually to domestic and foreign markets. Our methods of manufacturing include cold forming, hot forming, impact extrusion, hot forging, and conventional methods of making straights, elbows, and tees (sizes 1/8" - 2.5", M10 - M42) on CNC and multiple spindle screw machines.

From our nine global locations we are in a position to offer full technical and logistic support where you need it most. We have a proven track record of supplying and supporting customers on every continent and are an approved supplier to many of the world's leading equipment manufacturers.

We have over 320,000 sq ft of manufacturing and warehouse space and all manufacturing facilities are ISO certified. We understand that it is our job to supply you with a quality product, on time, every time.

DETAIL A
SCALE 3 : 1



WWF BRANCHES

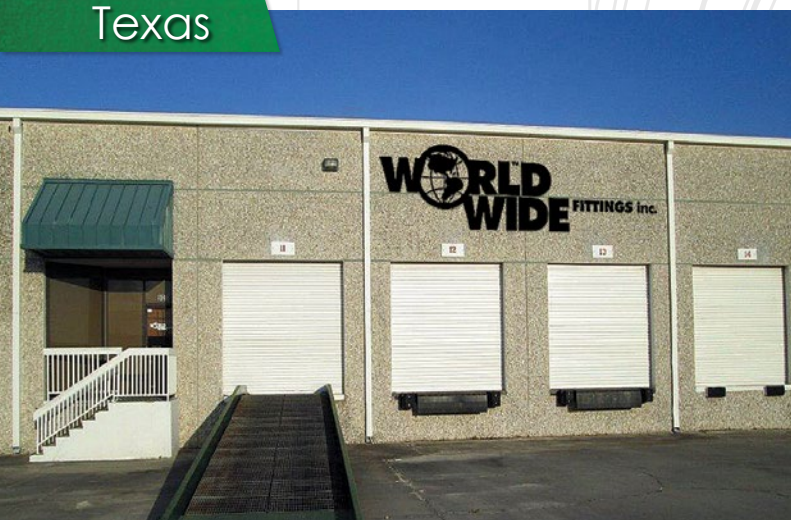
Nevada



Pennsylvania



Texas



Florida



South Carolina



UK & Europe



PER ASME B46.1-1995

U.S. MANUFACTURING



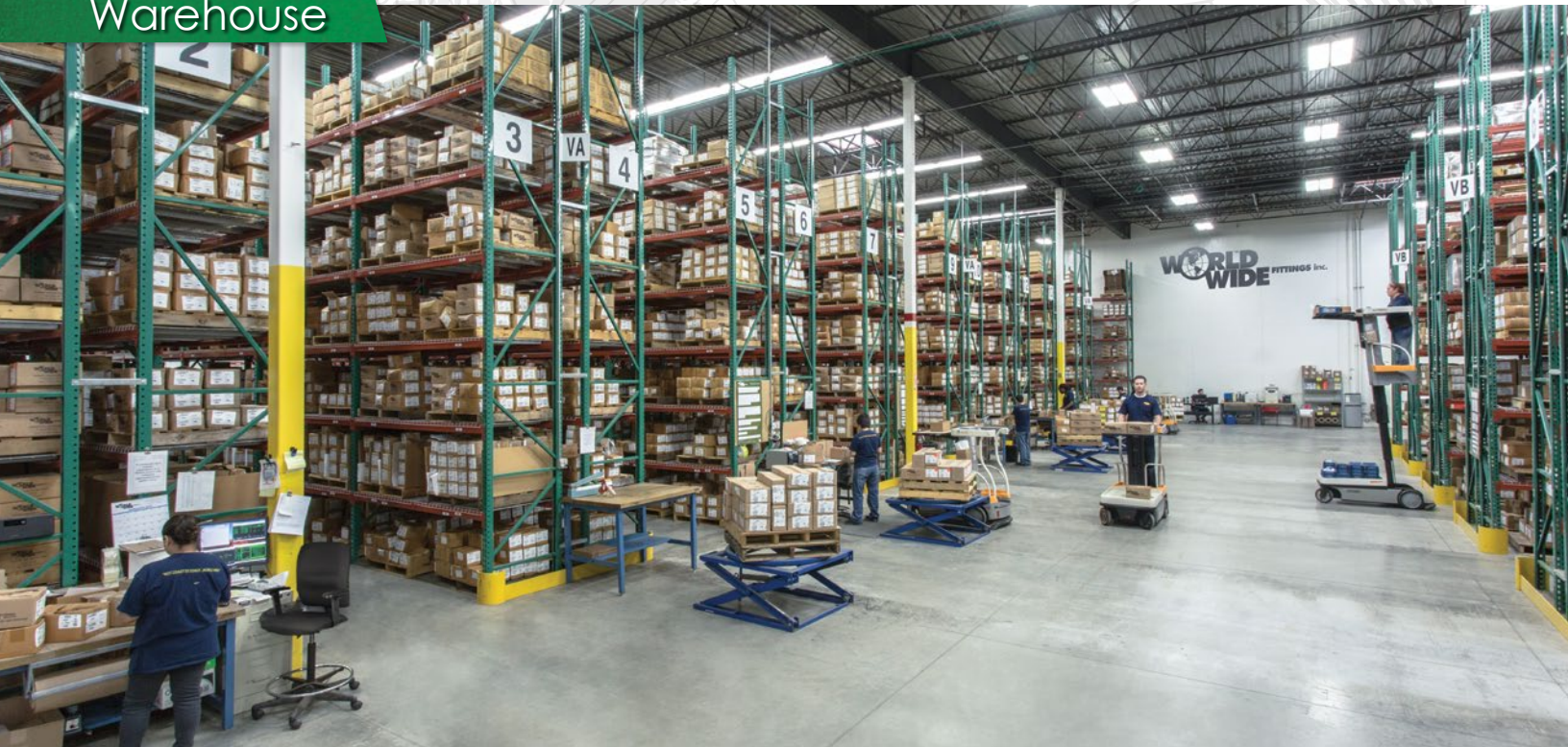
Screw Machines



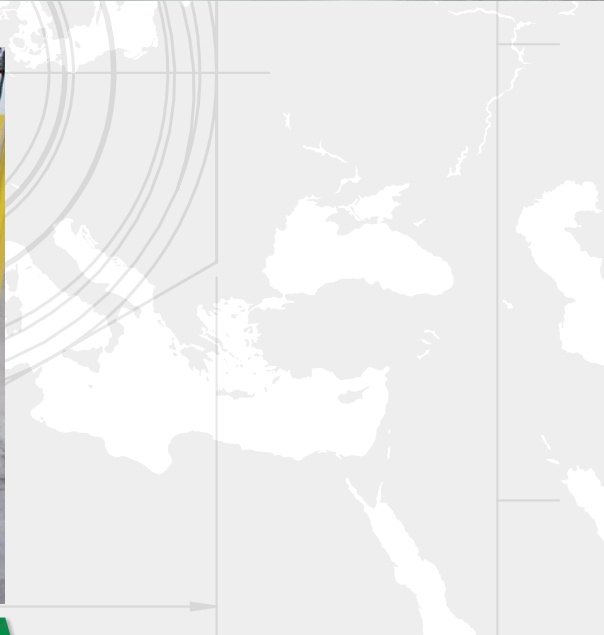
CNC Machines



Warehouse



Assembly



Parts Washer



N-A-A

TOLERANCES
 ALL CORNERS 0.005-0.010 MAX
 DIMS UNLESS SPECIFIED
 ANGULAR: ± 0.5°
 X.X ± 0.1
 X.XX ± 0.02
 X.XXX ± 0.010
 DIMS. TO BE WITHIN 0.008 T.I.R.
 SURFACE ROUGHNESS
 PER ASME B46.1-1995

DRAWN	Z
CHECKED	G
ENG APPR.	G
UNITS	IN
DATE	

CHINA

27 0.006 A

2 1.914 1.904

7

WWF Manufacturing

Techform



Manufacturing Plant: Fittings and Adapters



Manufacturing Plant: Cold Formed Nuts, Sleeves, Tube/Hose End Components



China Manufacturing: We utilize the most sophisticated manufacturing techniques available insuring that from prototypes to high volume production quantities, customers requirements are met.



China Assembly: We recognize the importance of proper assembly, packing, and logistical support.

DETAIL A
SCALE 3 : 1

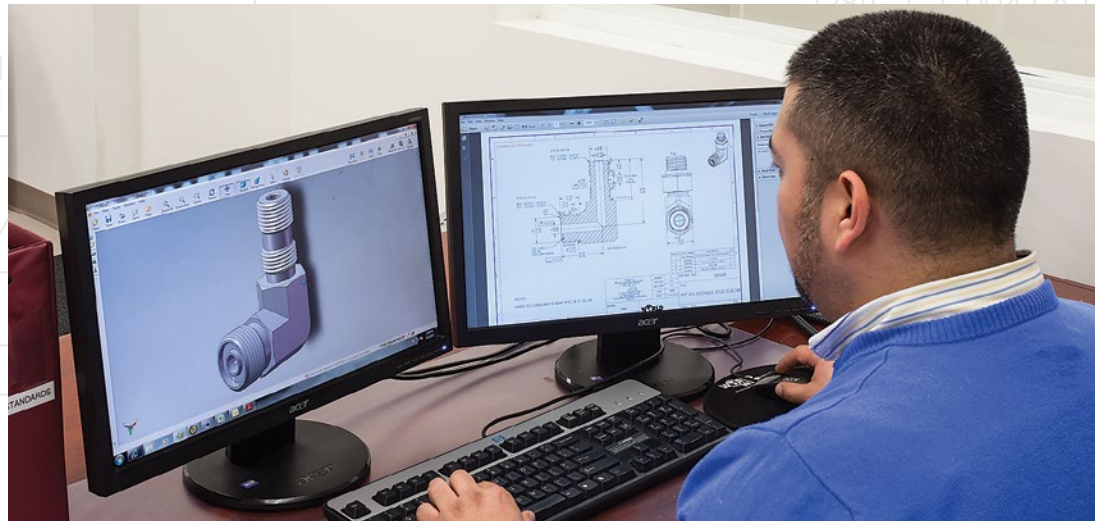
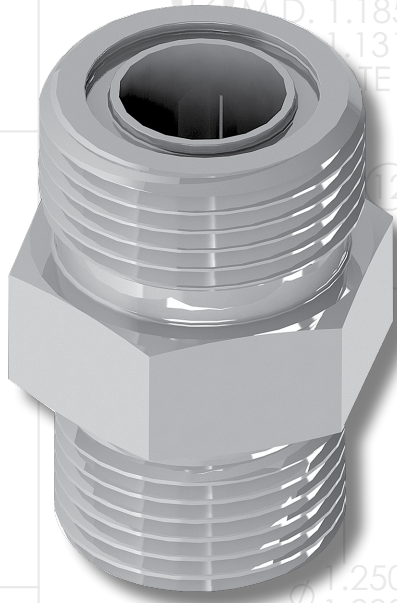
CHINA



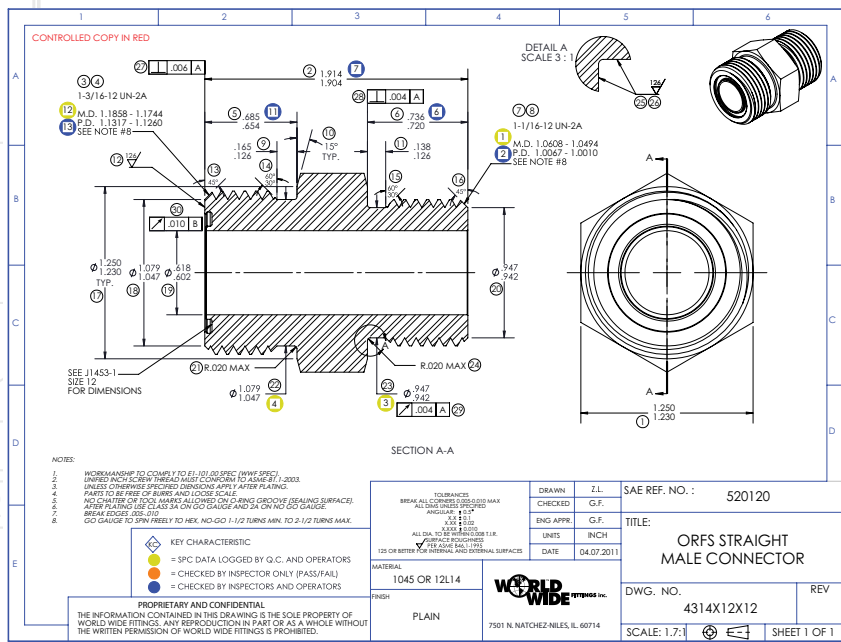
Design and development of our own production equipment in house is also a key function of our Suzhou facility. Continuous improvement in our production process has enabled us to expand production to meet growing customer demand.



Automation is key to our future development and growth. Our in house development of auto inspection equipment insures product conformity without the need for manual inspection and sorting. This enables us to maintain our competitive edge while meeting customer expectations.



As an active member of SAE we are constantly updating our internal specifications to reflect the latest SAE standard. This allows us to quickly make the latest advancements in fitting design and development available to our customers. We utilize state of the art test equipment during the manufacturing process and also conduct burst tests, impulse tests, cleanliness tests and salt spray analysis to insure our parts meet or exceed customer requirements.



Our Engineering staff is available to evaluate hydraulic piping systems, eliminate unnecessary components and leak paths, and establish the most efficient and economic selection of fluid connectors. In situations where a standard fitting will not suffice, we can assist with the design and manufacture of special fittings and provide prototype samples for evaluation.



DETAIL A
SCALE 3 : 1

QUALITY CONTROL

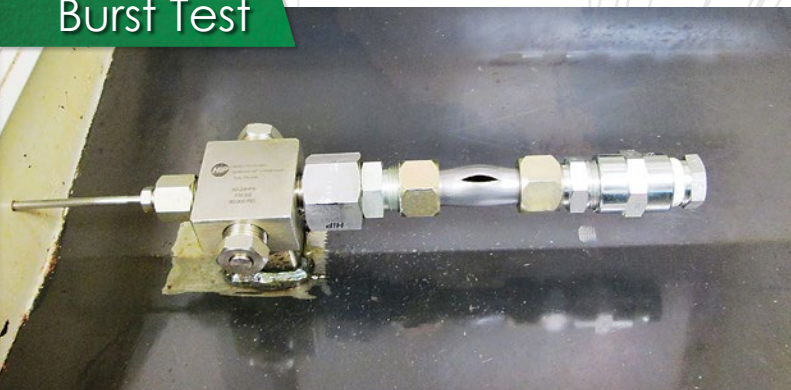
SPC Inspection



Impulse Test



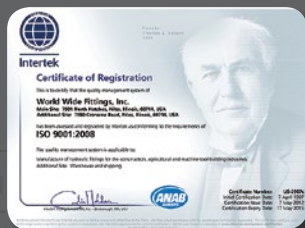
Burst Test



Salt Spray Test



ACCREDITATIONS



World Wide Fittings is a Caterpillar certified supplier of excellence on three continents.

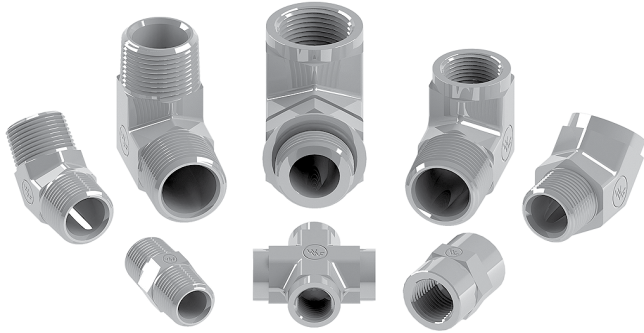
US ISO 9001:2008

LUXU ISO 9001:2008
LUXU ISO 14001:2004

UK ISO 9001:2008
UK ISO 14001:2004

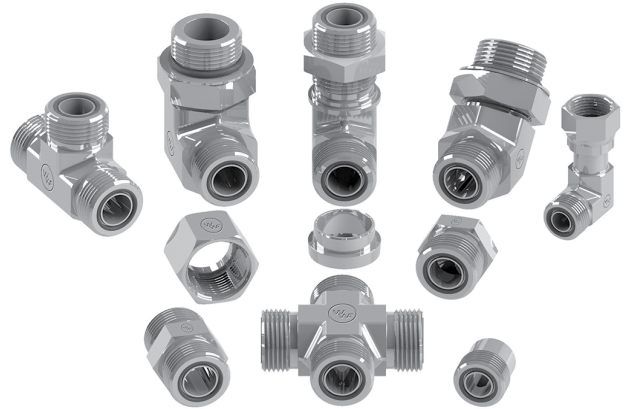
FITTINGS

Steel & Stainless Steel Pipe Fittings



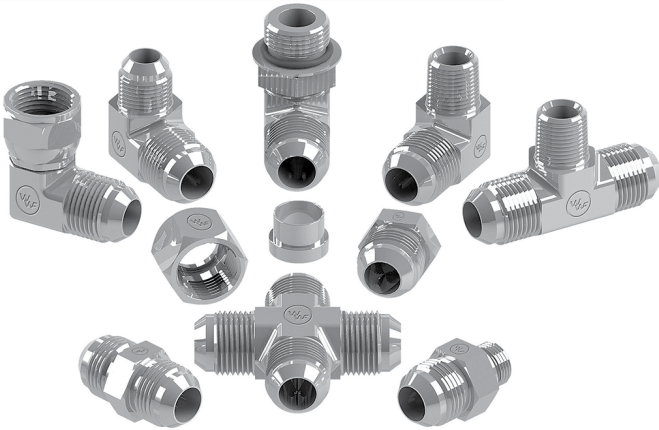
3000 SERIES

Steel & Stainless Steel "O" Ring Face Seal Fittings



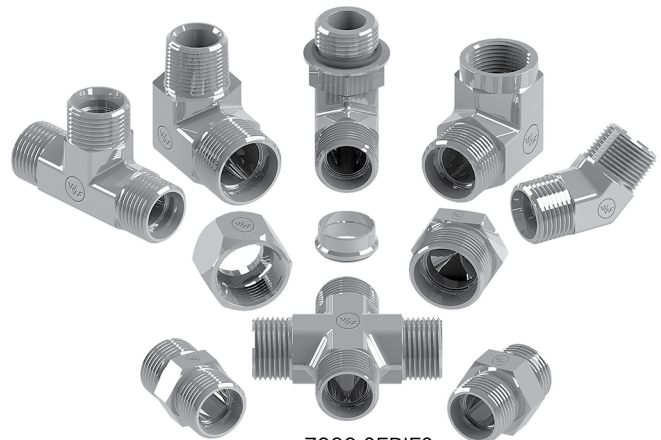
4000 SERIES

Steel & Stainless Steel 37° Flare (JIC) Fittings



5000 SERIES

Steel & Stainless Steel Flareless Fittings



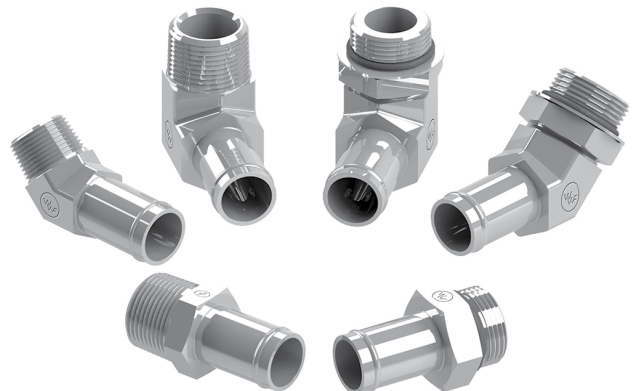
7000 SERIES

Steel & Stainless Steel Swivel Adapters



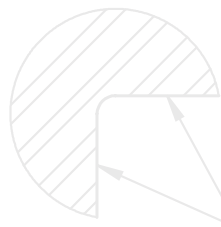
9000 SERIES

Steel Beaded Hose Barb Fittings



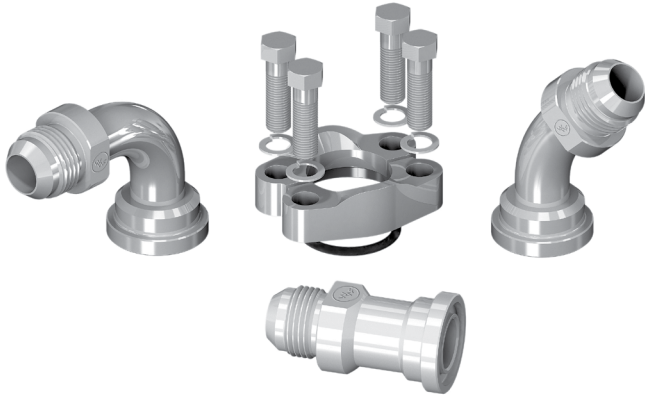
BARB END SERIES

DETAIL A
SCALE 3 : 1

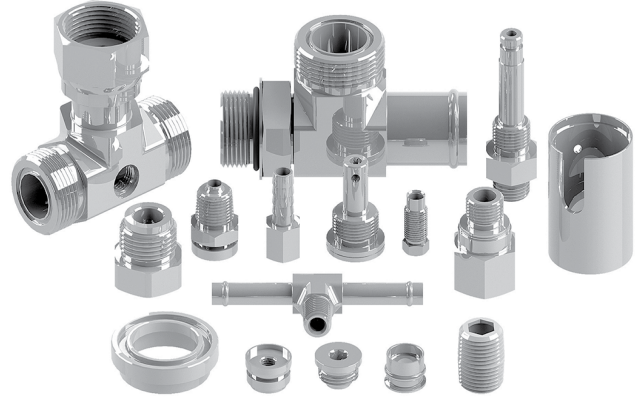


126

Steel & Stainless Steel Swept Fittings



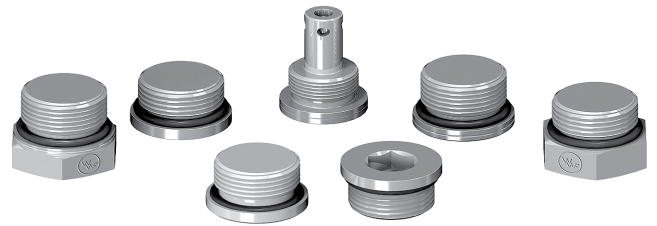
Steel & Stainless Steel Specials



Steel Braze-On Fittings



Steel & Stainless Steel Plugs



Steel & Stainless Steel International Conversion Fittings



Hydraulic Fittings Kits



FACILITIES

USA LOCATIONS

Corporate Headquarters

600 Corporate Woods Parkway
Vernon Hills, IL 60061
Local: 847-588-2200
Phone: 855-573-4735
Fax: 800-393-9894

REGIONAL WAREHOUSE

Nevada

708 - 710 Spice Island Dr.
Sparks, NV 89431
Phone: 855-340-3030
Fax: 844-666-2828

Texas

1819 Turning Basin Dr.
Suite 908
Houston, TX 77029
Phone: 888-511-9749
Fax: 844-360-9785

REGIONAL WAREHOUSE

Pennsylvania

934 Marcon Blvd.
Suite 101
Allentown, PA 18109
Phone: 855-261-7851
Fax: 855-261-7852

South Carolina

1635 Poplar Drive Extension
Greer, SC 29651
Phone: 844-357-8353
Fax: 844-363-0235

Florida

1725 Park Lane
Jupiter, FL 33458
Phone: 888-779-7749
Fax: 888-779-4487

INTERNATIONAL LOCATIONS

United Kingdom

Middlemore Lane West
Aldridge, West Midlands
WS9 8BG
Phone: 44-1922-745-055
Fax: 44-1922-745-054

China

WWF Manufacturing
Lian Nan Rd.
Jiangsu, China
Phone: 86-512-6329-5888
Fax: 86-512-6329-1122

China

Techform
No 24 Heshun Rd.
Suzhou, China
Phone: 86-512-6501-4234
Fax: 86-512-6593-3178



PRIMARY INDUSTRIES SERVED

- Construction Equipment
- Agriculture Equipment
- Mining Equipment
- Machine Tools
- Transportation Equipment
- Forestry Equipment
- Power Generation
- Marine Equipment
- Military Equipment
- Tube Bending and Fabrication
- Hose Assembly Manufacturers
- Compressor Manufacturers

